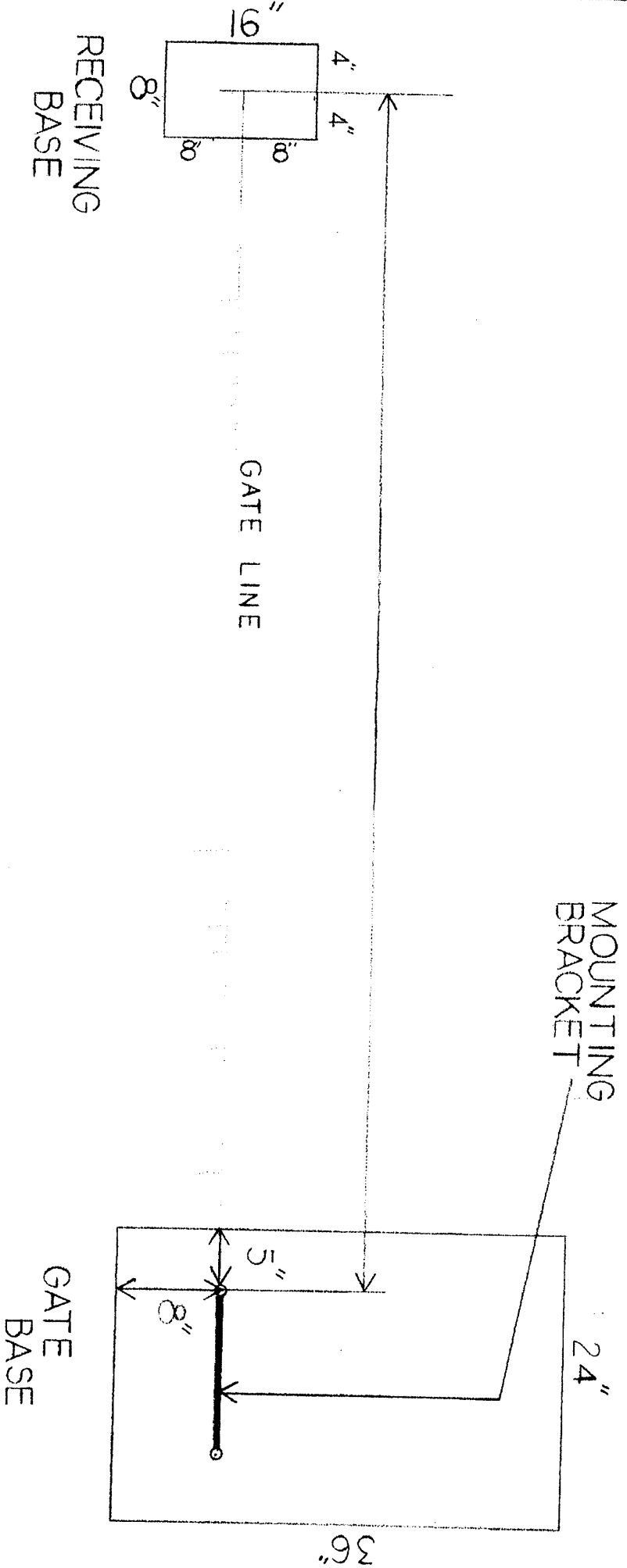


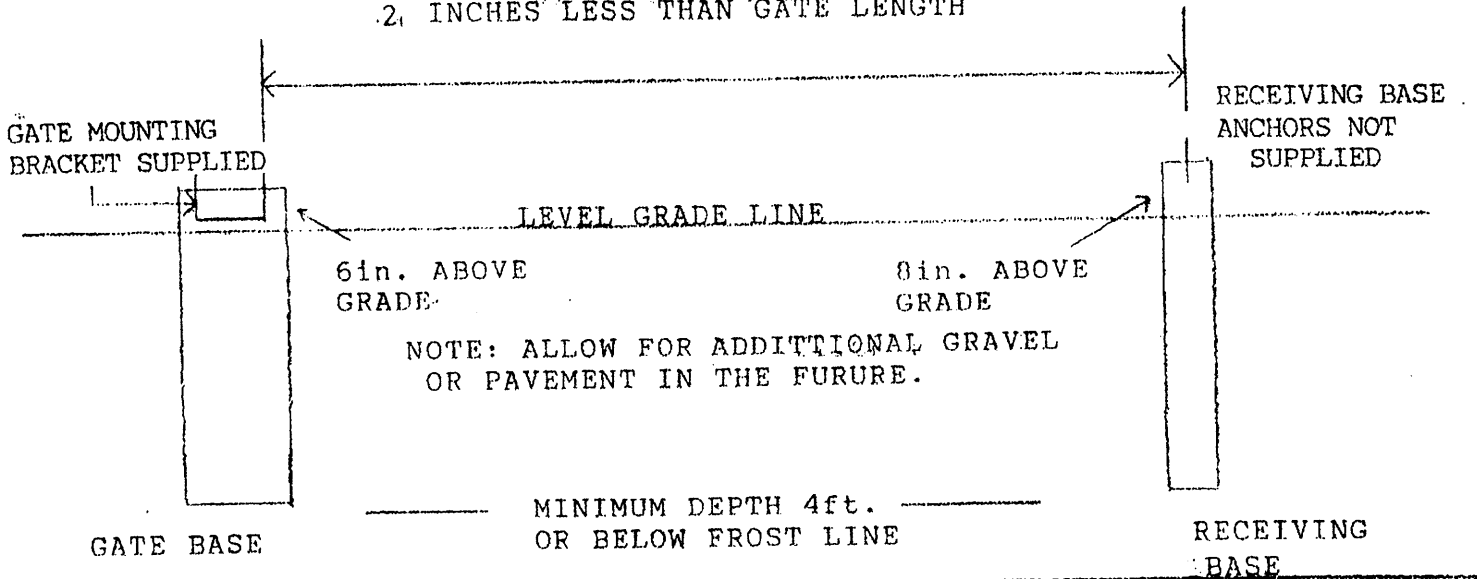
FOOTING DIAGRAM



**** INSTRUCTIONS ****

(1) Footing location should be carefully and accurately laid out. Be sure to consider drainage, distance from overhead obstacles, power lines, trees, building and fence clearance. (2) Excavate dirt to required depth. (3) Stake forms over the holes. Be sure they are level. (4) Fill with concrete. (5) Position mounting bracket in wet concrete so the flanges are flush with top level of platform. (6) Allow at least 72 hours for concrete to dry. (7) Receiving base can be more easily installed by first installing the gate. Gate should be level when closed.

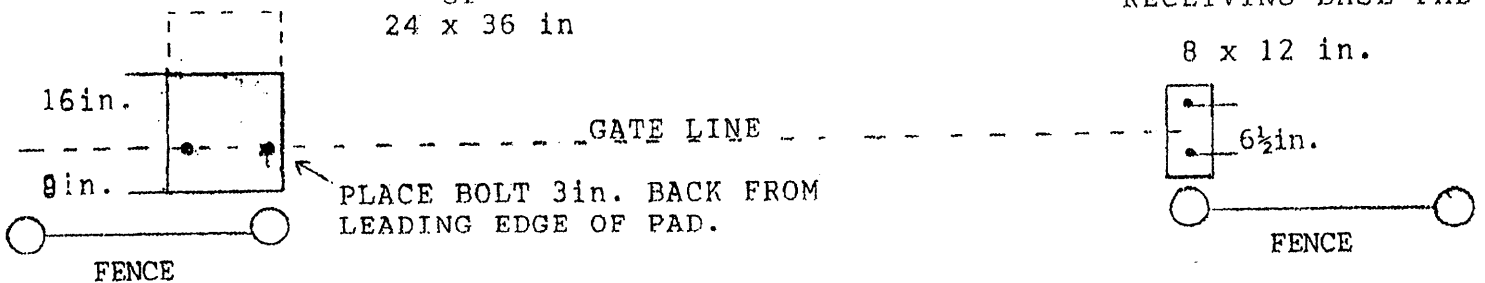
DISTANCE BETWEEN BOLT CENTERS IS
2 INCHES LESS THAN GATE LENGTH



NOTE: CONTROL/BATTERY BOX MAY BE MOUNTED ON FENCE OR POST OR ON PAD. TO PAD MOUNT EXTEND CONCRETE 12in. TO THE INSIDE.

GATE BASE PAD 24 x 24 in.
or
24 x 36 in

RECEIVING BASE PAD
8 x 12 in.



GATE SHOULD BE 6in. LONGER THAN FENCE OPENING.

LAZY GATE

FOOTING DIAGRAM
LEFT HAND

NOT TO SCALE